

ELASTOMERS

SEMI RIGID & RIGID PU

TRANSPARENT SYSTEMS

TECHNICAL PRODUCTS

PARIS FRANKFURT LONDON MILANO BARCELONA BRATISLAVA SHANGHAI NAGOYA DUBAI PUNE DETROIT MEXICO CITY

RAPID PROTOTYPING



ISO 9001



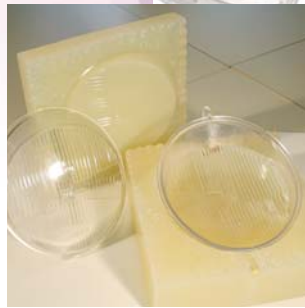
ISO 14001



TRANSPARENT SYSTEM

AXSON started to develop and produce PU systems dedicated for vacuum process almost 20 years ago. We always focus on customer needs to adjust our formulations.

Most of them are Rohs compliant and mercury free.



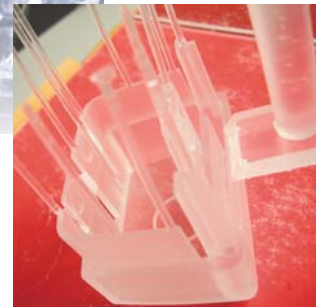
PX 522 HT

Similar to PMMA. Dedicated to thin technical prototypes up to 10 mm, like lenses for headlights, traffic lights, light tubes, transparent covers, etc. Short demoulding time 4-5 minutes at 70°C. Good thermal resistance, easy to sand and polish. Withstand weather conditions. UV stable.



PX 521 HT

Similar to PMMA. Dedicated for glass, art and decoration sectors. Could be cast with or without vacuum casting machine in 50 mm thickness (but degas prior to cast in mould). Long working time, Easy to polish. Long term UV stability.



PX 225 NEW

Technical transparent parts simulating polycarbonate. All parts simulating mass tinted ABS. Short demoulding time. High impact resistant. When long term ageing is required please use PX 521 HT as the best offer for UV stability.

FLEXIBLE



PX 761

Rubber aspect prototype parts, seals. The only soft PU able to withstand 100°C as a working temperature. Translucent amber colour; could be pigmented. Convenient pot life of 10 minutes.



UPX 8400

Axon's newly developed UPX 8400 is a 3 component PU elastomers with adjustable hardness. UPX 8400 is used for making prototypes small series of rubber-like parts. Adjustable hardness Shore A 20 - 85, easy to process and pigment outstanding strength, low aggressiveness to silicone moulds. Dedicated to achieve rubber like prototype parts for all sectors of activities.

TECHNICAL PLASTICS



PX 234 HT

Similar to PPS or PEEK. For all parts that have to withstand high temperatures, parts for engine compartments or household appliances. Really low viscosity, short demoulding time in 3 mm thickness. Even after final post curing it retains a nice flexibility.



PX 330

Technical parts for the aeronautical industry according to its FAR 25 certification. All parts requiring a fire-resistance rating in other markets. Rohs compliant for electrical casings.

POLYADDITION SILICONE RUBBERS

ESSIL 291: Silicone polyaddition specially formulated for moulds making in vacuum technology. Exists in 2 versions: dry for transparent resins moulding or parts submitted to paint finishing and oily for improvement of number of cast parts. Its hardness of 38 A shore makes demoulding easier than standard silicones without any mould deformations. The inhibitor ESSIL 90 allows large castings by pot life extension about 5 hours.

References	Description	Colour	Main application	Mixing ratio	Viscosity (mPa.s.)	Pot life	Hardness (shore)	Time before demoulding at 40°C
ESSIL 291/291	Standard	Transparent	Self demoulding, flexible moulds for rapid prototyping.	100/10	40.000	60 mn	38 A	10 h
ESSIL 291/292	Transparent, oiled.			100/10	40.000	60 mn	38 A	10 h

HDPE – PP TYPE



PX 212

PP-aspect prototype parts. Automobile interior trim, covers for household appliances. Translucent, can be pigmented in all colours. Good heat resistance.



PX 205

Similar to HDPE. For all parts with an integrated hinge, pinions, guide rails, rollers, limit stops. Long pot life, 80°C of working temperature. High abrasion and impact resistance. Low aggressiveness of silicone moulds.

ABS – HIPS – FILLED PP TYPE



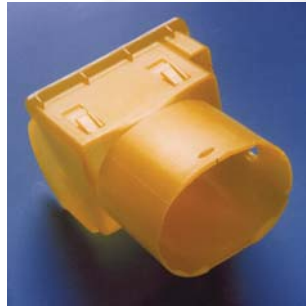
PX 2017 HT

Used by casting for the production of prototype parts and mock-ups whose mechanical properties are close to ABS or filled PP. Thermoplastic-like resistance in temperature (TG > 180°C). Almost no change of mechanical properties after ageing under temperature. Good resistance to automotive fluids (except brake liquid). According to its exceptional compatibility with silicone moulds it's possible to achieve easily 50 castings in a mould without deterioration.



PX 223 HT

ABS-like prototype parts for small production runs in vacuum casting machines. High chemical resistance against standard automotive fluids (except brakes fluid). Temperature stability up to 110°C after appropriate post curing.



PX 100

HIPS-aspect prototype parts. Large dimensions possible with or without vacuum casting machines. (Will be replaced by UR 845).



PX 220

Pure white resin similar to PS Choc. For all parts requiring good impact resistance even with thin sections. Easy to make resistant clips or all parts submitted to stress, as piece of working mechanisms.



PX 226

Off white resin similar to high flexural modulus ABS or ABS/PC blends. Suitable for low tension electrical equipments like casings for circuit breakers or switches as well as for House hold appliances parts; coffee machines, vacuum cleaner and casings for medical equipments. Also in long pot life version of 8 minutes for large parts.



**PX 245 /
PX 245 L**

The only filled system of the PX range, similar to P.O.M. and filled thermoplastics as filled PA 6.6. For all parts requiring high stiffness in flexion. The right answer to mould parts for coping machines, printers and all electronic devices. Good abrasion resistance.

Selector Guide

References	Description	Colour	Mixing ratio	Flexural modulus (MPa)	Tg (°C)	Pot life (min)	Hardness (shore)
TRANSPARENT SYSTEM							
PX 522 HT	Low viscosity. High temperature resistance. Maximum advisable thickness: 5 mm. UV and weather resistant	transparent	100/55	2100	110	7	87D
PX 521 HT	Low viscosity. High temperature resistance. UV and weather resistant. Does not require vacuum casting machines. Possible to cast up to 2 kg. Long working time, easy to polish.	transparent	100/55	2100	110	20	87D
PX 225 NEW	Low viscosity for easy casting. Good impact and flexural resistance. Very easy coloring with all kind of pigments (no water base) like Axson CP range.	transparent	100/75	2500	80	4 to 5	80D
FLEXIBLE							
PX 761	Can withstand continuous 100°C temperatures. Long pot life. Low viscosity. Can be tinted.	amber	100/45	800	100	10	63A
UPX 8400	3 Components system with adjustable hardness. Pigmentable. easy to process and pigment outstanding strength, low aggressiveness to silicone moulds. Dedicated to achieve rubber like prototype parts for all sectors of activities.	off white	variable	450 to 750	80	12	From 20 A to 85 A
SPECIFIC, TECHNICAL PLASTICS							
PX 234HT	Very high temperature resistance. Easy to cast. Good impact resistance. Really low viscosity, short demoulding time in 3 mm thickness. Even after final post curing it retains a nice flexibility.	light amber	100/50	1850	220	5	80D
PX 330	Conforms to FAR 25 (fire resistance) standard. Easy to use. Compliance ROHS.	white	100/100	3400	100	5	87D
HDPE - PP type							
PX 205	Unbreakable "hinge effect". Excellent abrasion resistance. Does not attack silicon moulds.	cream	100/50	500	90	13	70D
PX 212	Low viscosity. Reduced demoulding time. Good impact resistance, can be pigmented in all colours. Good heat resistance.	translucid	100/100	1200	90	5	76D
ABS - HIPS - FILLED PP TYPE							
PX 2017 HT	Low viscosity for easy casting, Short demoulding time, and low aggressiveness on silicon moulds. According to its exceptional compatibility with silicone moulds it's possible to achieve 50 castings in a mould without deterioration. Temperature stability up to 130° C.	black	100/80	1600	>130	6	80D
PX 220	Very good impact resistance, even at very low thicknesses. Very plastic behaviour.	white	100/50	2000	90	5	80D
PX 100	Low viscosity. Manual application possible. Long pot life.	white	100/100	1500	75	15	74D
PX 226L	Low viscosity. PX 226 suitable for casting large parts. Long pot life.	white	100/50	2500	105	8	82D
PX 226	Very short demoulding time. Low viscosity.	white	100/50	2500	105	4	82D
PX 223 HT	Low viscosity. Good impact resistance High temperature resistance. Does not attack silicone moulds. Resistant to hydrocarbons. Temperature stability up to 110°C after appropriate post curing.	black	100/80	2300	>120	7	80D
PX 245 / PX245L* * pot life 8 mn	Filled. Very short demoulding time. Very rigid. Good abrasion resistance.	off white	100/40	4500	95	4 to 8	85D

Pigments for PX range: CP range with 6 colours (white, black, blue, yellow, green, red).

Your partner for vacuum casting equipments:



www.mk-technology.com

Axson Spain Tel. +34 9 32 25 16 20	Axson Italy Tel. +39 02 96 70 23 36	Axson Japan Tel. +81 5 64 26 25 91	Axson China Tel. +86 21 58 68 30 37
Axson France Tel. +33 1 34 40 34 60	Axson Germany Tel. +49 6 07 44 07 11-0	Axson Middle East Tel. +971 7 2432227	Axson North America Tel. +15 1 76 63 81 91
Axson Slovakia Tel. +42 1 76 42 25 26	Axson UK Tel. +44 16 38 66 00 62	Axson India Tel. +91 20 25 51 07 10/11	Axson Mexico Tel. +52 55 52 64 49 22

AXSON TECHNOLOGIES 15, rue de l'équerre - BP 40444 - 95005 Cergy cedex - FRANCE

Tel. (+33) 01 34 40 34 60 - Fax (+33) 01 34 21 97 87 - E-mail: axson@axson.com

More information and downloads available on the Website: www.axson.com

